



**Pope Mixers:** Powerful, Reliable, Versatile





## Pope Mixers for Demanding Applications

Pharmaceuticals  
BioTech  
Foods & Flavors  
Cosmetics  
Polymers

High purity speciality chemicals  
General processing and R&D  
Many others



Interchangeable



Adaptable



Application Optimized

### Pope Mixers – Quality & Versatility

Since 1986, Pope Scientific mixers have been noted for their ruggedness and versatility in a wide range of demanding applications. All feature robust design, top quality materials, precision fabrication, and are fully pretested over their entire operating range. For even greater flexibility, motors, shafts and impellers can be completely interchangeable.

Regardless of the model and configuration you choose, you can be confident your Pope mixer will deliver the performance your application demands – and the reliability you expect.

#### Series 800 Mixer

The high-performance Series 800 mixer is designed for the most demanding applications, such as strict sanitary, temperature and pressure/vacuum extremes, high chemical compatibility and other uses. You may specify the type of motor (electric, air, explosion proof) you want, various optional seals, even your choice of impeller types.

#### Series 600 Mixer

The compact Series 600 mixer is the ideal choice for those less demanding applications and where space is at a premium. As with all Pope mixers, you may select from a wide range of motors, seals, impellers and other options to match your exact application needs.

#### Series 800 Mixer Specifications

|                          |  |
|--------------------------|--|
| <b>Wetted Material</b>   | 316-L stainless steel, Hastelloy C-276, other alloys – Teflon/other coatings available   |
| <b>Vessel Connection</b> | 3" sanitary clamp standard – 150 lb flange mount, others available   |
| <b>Bearings</b>          | High temperature, permanently lubricated. Double row lower, single row upper   |
| <b>Shaft</b>             | 3/4" diameter, standard or detachable "pool cue" styles  |
| <b>Impeller</b>          | Marine type standard. Turbine, hydrofoil, Cowles, anchor, paddle, others available per application (mounted with set screws or welded, ground and polished)  |
| <b>Motor Mount</b>       | Standard or quick removal type (for autoclaving, etc.)   |
| <b>Motors</b>            | <b>Electric:</b> <ul style="list-style-type: none"> <li>• 1/3, 1/2, 3/4 hp DC variable speed</li> <li>• 1/4, 1/3, 1/2, 3/4 hp DC gearmotor (choice of speed ranges)</li> <li>• Others per application (including explosion proof, AC)</li> </ul> <b>Air:</b> <ul style="list-style-type: none"> <li>• 3/4, 1-1/2 hp variable speed (200-800 rpm)</li> <li>• 1/4, 1 hp variable speed gearmotor (30-300 rpm)</li> <li>• Others per application</li> </ul> |
| <b>Cooling</b>           | Teflon lip seal to protect ball bearings. Two coolant side ports.  |

#### Seal Specifications

|                          |  |
|--------------------------|--|
| <b>Version</b>           | Type 8 balanced, single, dry-running mechanical seal (double mechanical and other types available)   |
| <b>Materials</b>         | 316 stainless standard (Hastelloy available) Viton elastomers (Kalrez, others per application) Carbon primary ring, tungsten carbide mating ring |
| <b>Max Operating Spd</b> | 800 rpm – optional tachometer available (recommended operating speed)  |
| <b>Max Seal Pressure</b> | Full vacuum to 120 psig (dry running), 150 psig (wet running)  |
| <b>Seal Lubrication</b>  | Dry (can be wetted - see "Cooling" above)  |
| <b>Operating Temp</b>    | -40° F to 300° F   |
| <b>Seal Life</b>         | 3000 hours minimum (estimated)   |

#### Series 600 Mixer Specifications

|                          |  |
|--------------------------|--|
| <b>Wetted Material</b>   | 316-L stainless steel  |
| <b>Vessel Connection</b> | 2" sanitary clamp standard, others available   |
| <b>Shaft</b>             | 1/2 diameter (detachable "pool cue" type available)  |
| <b>Impeller</b>          | Marine type standard. Turbine, hydrofoil, Cowles, others available per application (mounted with set screws or welded, ground and polished)  |
| <b>Motor Mount</b>       | Standard or quick removal type (for autoclaving, etc.)   |
| <b>Motors</b>            | <b>Electric:</b> <ul style="list-style-type: none"> <li>• 1/4, 1/3, 1/2 DC variable speed</li> <li>• 1/8, 1/4, 1/3 hp DC gearmotor (choice of speed ranges)</li> <li>• Others per application (including explosion proof, AC)</li> </ul> <b>Air:</b> <ul style="list-style-type: none"> <li>• 3/4 hp variable speed (200-800 rpm)</li> <li>• 1/4 hp variable speed gearmotor (30-300 rpm)</li> <li>• Others per application</li> </ul> |

#### Seal Specifications

|                          |  |
|--------------------------|--|
| <b>Version</b>           | Type 6 single, dry-running mechanical seal   |
| <b>Materials</b>         | 18-8 stainless hardware<br>Viton elastomers (Buna, EPDM available)<br>Carbon primary ring, ceramic mating ring |
| <b>Max Operating Spd</b> | 800 rpm – optional tachometer available (recommended operating speed)  |
| <b>Max Seal Pressure</b> | 75 psi (not rated for vacuum use)  |
| <b>Operating Temp</b>    | -20° F to 240° F   |
| <b>Seal Life</b>         | 5,000 hours (estimated)  |

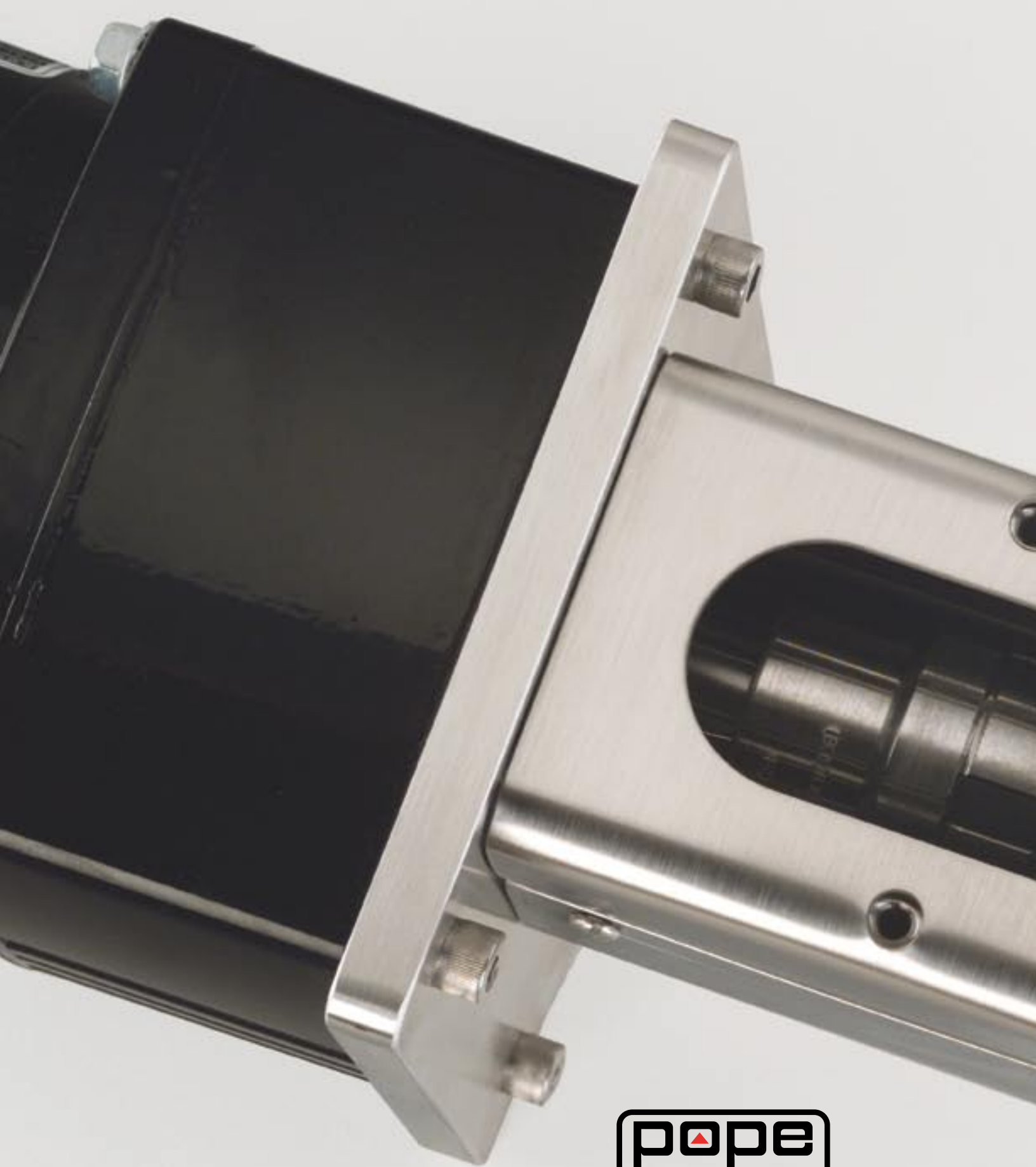


### Pope Scientific – Total Solutions

Pope's Mixers have been proven and utilized in many industries. They were first offered as accessories to Pope's Portable Pressure Vessels and Process Vessel Systems product lines. Now, they are also available as stand alone mixer units for various existing vessels in sizes ranging from 2 to 2000 liters.

We can provide more than a mixer. We offer complete turnkey mixing systems, blenders, dispensers, reactors, fermenters, transfer and process vessels. Additionally, Pope offers skid mounted processing stations with full instrumentation and controls. In such systems, the mixer is optimized and integrated with other system components to allow for greatest efficiency.

Pope Scientific's ability to work with a wide range of customer applications means you get the technology, equipment and services at one source. Consult with our experienced staff about your special application. We will carefully assess your needs to determine the most appropriate solution.



**Pope Scientific, Inc.**

351 N. Dekora Woods Boulevard • P.O. Box 80018 • Saukville, WI 53080 • USA  
Phone: 262 268-9300 • Fax: 262 268-9400 • E-mail: [sales@popeinc.com](mailto:sales@popeinc.com) [www.popeinc.com](http://www.popeinc.com)